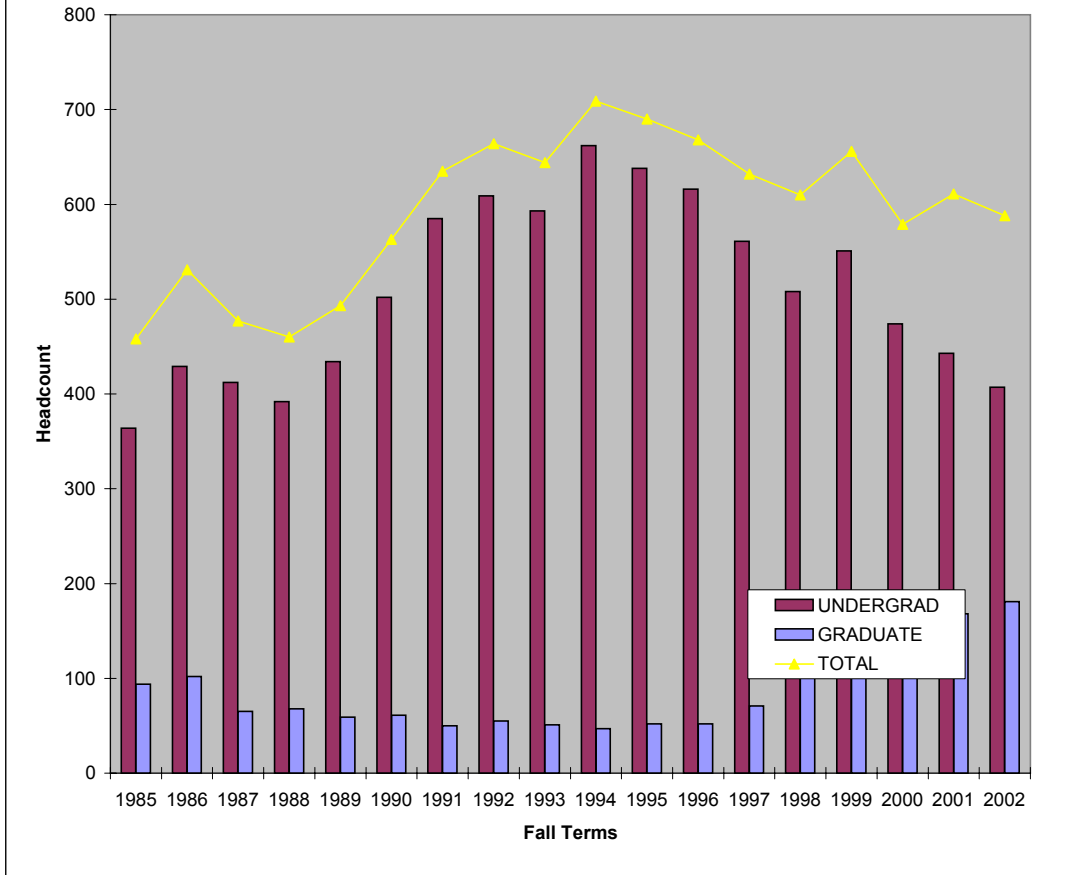


**LOYOLA UNIVERSITY  
City College\* -- Headcounts from 1985-2002**



TERM	TOTAL UNDERGRADUATE		TOTAL GRADUATE		COLLEGE TOTAL		TOTAL
	Male	Female	Male	Female	Male	Female	
Fall 1985	120	244	36	58	156	302	458
Fall 1986	130	299	38	64	168	363	531
Fall 1987	118	294	19	46	137	340	477
Fall 1988	124	268	22	46	146	314	460
Fall 1989	136	298	16	43	152	341	493
Fall 1990	145	357	18	43	163	400	563
Fall 1991	168	417	14	36	182	453	635
Fall 1992	163	446	16	39	179	485	664
Fall 1993	150	443	19	32	169	475	644
Fall 1994	172	490	16	31	188	521	709
Fall 1995	176	462	13	39	189	501	690
Fall 1996	168	448	22	30	190	478	668
Fall 1997	164	397	24	47	188	444	632
Fall 1998	158	350	27	75	185	425	610
Fall 1999	170	381	21	84	191	465	656
Fall 2000	142	332	20	85	162	417	579
Fall 2001	107	336	48	120	155	456	611
Fall 2002	99	308	41	140	140	448	588

Source: "Official Statistics" (Fall 1985-Fall 1994). Fall 1995-02: Data from STSTRMF Flatfile. Data as of 9/30/02. Office of Institutional Research

Note: Beginning Fall 1995, data does not include students who withdrew prior to the Official Stat date. File: CITYGRF.xls

\* Includes off-campus Baton Rouge Nursing beginning Fall 1990 and other programs offered off-campus but coded as "City."