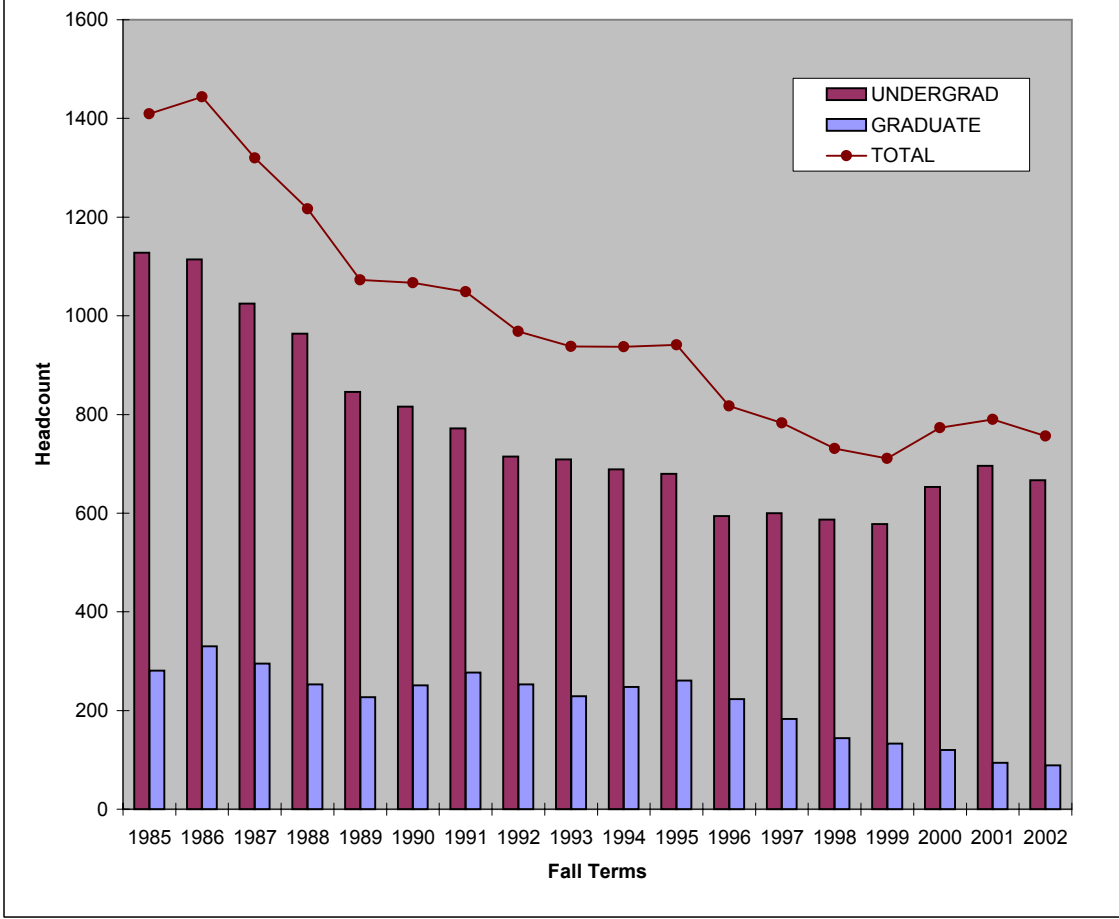


**Loyola University New Orleans  
College of Business Administration - Headcounts From 1985-2002**



TERM	TOTAL UNDERGRADUATE		TOTAL GRADUATE		COLLEGE TOTAL		TOTAL
	Male	Female	Male	Female	Male	Female	
Fall 1985	563	565	177	104	740	669	1409
Fall 1986	559	555	205	125	764	680	1444
Fall 1987	490	535	193	102	683	637	1320
Fall 1988	494	470	157	96	651	566	1217
Fall 1989	432	414	133	94	565	508	1073
Fall 1990	410	406	152	99	562	505	1067
Fall 1991	384	388	170	107	554	495	1049
Fall 1992	346	369	154	99	500	468	968
Fall 1993	339	370	141	88	480	458	938
Fall 1994	328	361	154	94	482	455	937
Fall 1995	329	351	161	100	490	451	941
Fall 1996	317	277	139	84	456	361	817
Fall 1997	303	297	120	63	423	360	783
Fall 1998	283	304	95	49	378	353	731
Fall 1999	286	292	93	40	379	332	711
Fall 2000	305	348	77	43	382	391	773
Fall 2001	340	356	56	38	396	394	790
Fall 2002	330	337	52	37	382	374	756

Source: "Official Statistics" (Fall 1985-Fall 1994). Fall 1995-02: Data from STSTRMF Flatfile. Data as of 9/30/02. Office of Institutional Research  
 Note: Beginning Fall 1995, data does not include students who withdrew prior to the Official Stat date. File: CBAGRF.xls